

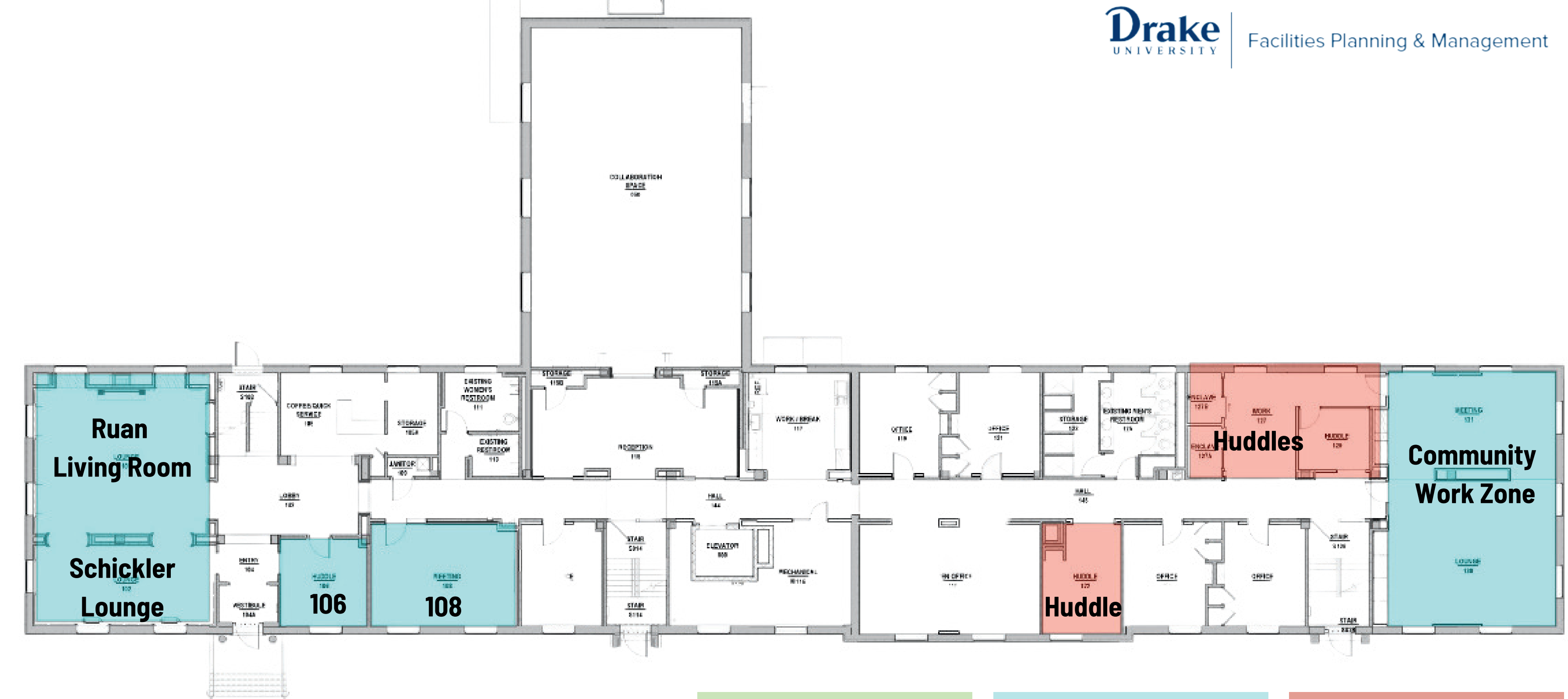
Johansen Student Center

First Floor

Ron & Jane Olson Center for Democracy

The Darling Institute

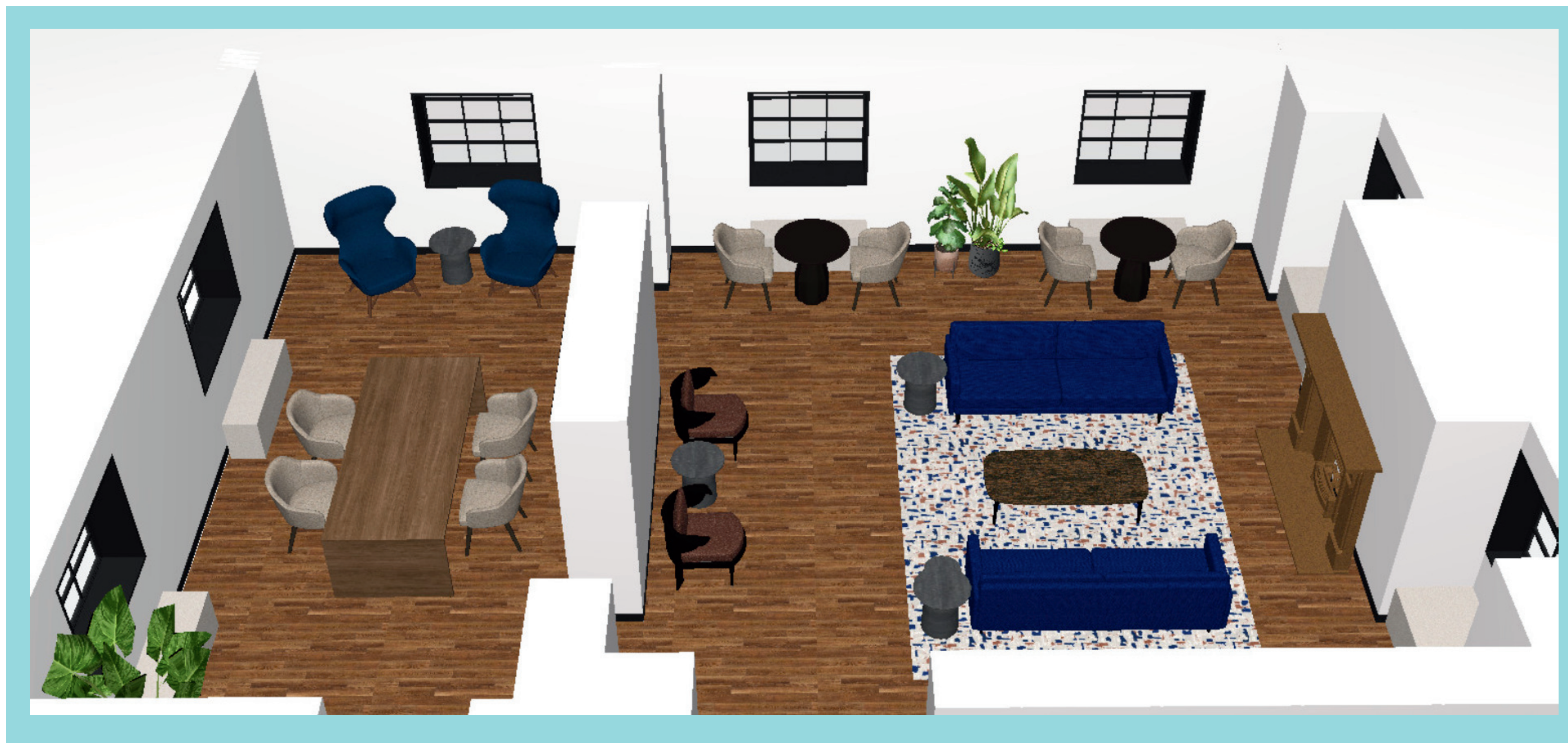
Community Engaged Learning



Space is reservable and furniture can be rearranged to meet the needs of the scheduled program.

Space is reservable but can also be used freely when not reserved. Furniture is set and room will be used as is.

Space is not reservable and can be used on a first come first serve basis. Furniture arrangement is set.



Ruan Living Room and Schickler Lounge

In keeping the character and history of the Morehouse Residence Hall, The Ruan Living Room and Schickler Lounge will usher you back in time. These rooms were kept as close to original as possible. You can enjoy a quiet study area or reserve the space for a small gathering.



Meeting 106 and Meeting 108

You will find several six to ten person conference rooms throughout the building. These are reservable spaces for meetings throughout the day and evening hours.



Huddles

The first floor offers several spaces to pop into for studying, impromptu meetings, or a moment of solace. These spaces are not reservable and you are welcome to come and go as you need.



Community Work Zone

On the north end of the first floor is the community work zone. This space is flexible for groups to work collaboratively. This space is reservable and also available to use freely when not reserved.